

FOOD AND PERISHABLES LOGISTICS WITH ADECON



ADECON's logistics experts have extensive experience in the import and export of temperature-controlled cargo. Whether it's locally produced food, fresh fruits and vegetables, seafood, or any other perishable food products, we understand the diverse demands for chilled distribution, storage, and transportation that each of these product categories entails. Therefore, we have developed expertise in a number of them and take a proactive approach, providing ongoing quality control to ensure that your products arrive at their destination in the best possible condition.

The 3 major principles of the integrated solution we provide for goods transit are:

1 transparency 2 quality control 3 cost consideration

Before the shipment:

- Examine if the items meet the agreed-upon requirements.
- Check to see if the items were refrigerated on schedule and at the proper temperature.
- Examine the packaging contracts and standards.
- Creating transport and third-party control documentation.

During transportation:

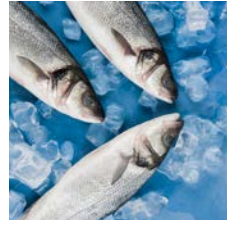
- Direct delivery to the port/airport or transshipment center through refrigerated land conveyance.
- To the destination or transshipment, sea or air freight is used.
- World transportation tracking.
- Verification of documentation with food authorities before and during delivery.
- Creating transit and customs documentation.

OUR CARGO FOCUS



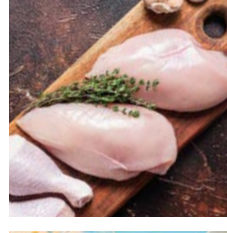
Fresh fruits and veggies

Whether it's topfruit, exotics, or tubers, our execution professionals store and export fresh food all over the world. They recognize that every day lost in the supply chain costs money.



Fish

ADECON provides comprehensive solutions to fish dealers, importers, and exporters. We can handle door-to-door shipping while maintaining product quality.



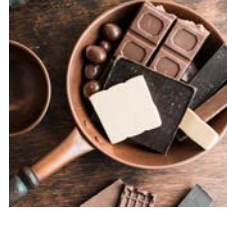
Meat and poultry

ADECON provides exceptional service to meat and poultry businesses. We promise timeliness, quality control, cost efficiency, and transparency.



Dairy

ADECON provides the finest service for dairy merchants. The shipping of your goods internationally is handled by us.



Chocolate & confectionery

Our execution specialists handle, store, and ship gourmet and confectionery goods that are frozen, refrigerated, and ambient all over the world.



OUR OFFICES

Our main office and headquarters is located in Debe, near Kalisz, in central Poland. In addition there are sales and operation offices located in Hamburg, Berlin, Gdynia, Warsaw and Wrocław.

CONTACT US

Poland | **ADECON Sp. z o.o.**

Dębe 47a | 62-817 Żelazków

+48 62 59 777 25

contactus@adecon.eu

www.adecon.eu

Germany | **ADECON Logistics GmbH**

Nagelsweg 28, 20097 Hamburg

+49 40 88 23 48 03

info@adecon-logistics.de

www.adecon-logistics.de